

The KMC Controls BAC-5050 is a multi-port BACnet router. Router highlights are:

- ◆ Easy to install and simple to configure.
- ◆ Routes building automation data between BACnet/IP, BACnet Ethernet and MS/TP networks.
- ◆ Supports BACnet IP pad routing.
- ◆ Direct serial or modem point-to-point connection.
- ◆ Conforms to ANSI/ASHRAE Standard 135-2001.



## Communications

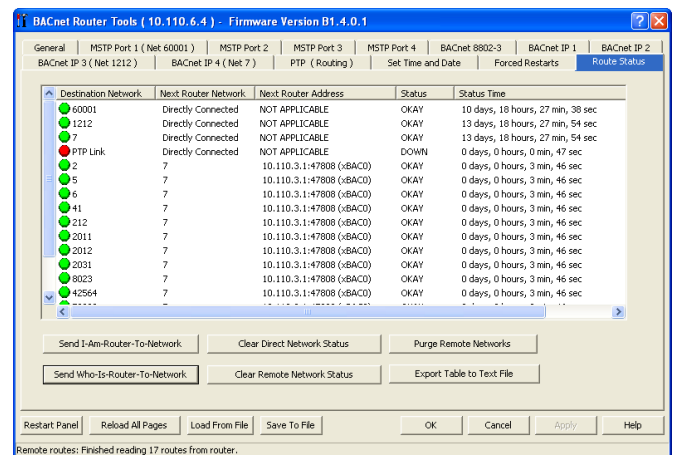
- ◆ 10baseT Ethernet connection for BACnet/IP and 802.3 networks
- ◆ Four, EIA-485 ports for connecting to MS/TP networks. Each port supports rate up to 76.8 kilobaud.
- ◆ Supports four IP networks. Each network can be configured as any of the following.
  - BACnet broadcast management device (BBMD)
  - BACnet broadcast management device with network address translation (previously Addendum O to 135-2008)
  - Normal BACnet IP network
  - PAD (packet assembling/disassembling) routing
  - Foreign device registration with BACnet broadcast management devices (BBMD)
- ◆ Point-to-point protocol support on EIA-232 port.
- ◆ Dial-up point-to-point connection with external modem. KMD-5569 recommended.
- ◆ Two, EIA-232 connectors for point-to-point, diagnostics and direct connection to computer serial ports.

## Memory

- ◆ 2 MB nonvolatile flash memory; 2 MB RAM
- ◆ Configuration parameters are stored in nonvolatile memory
- ◆ RAM automatically backed up to flash memory every 6 hours

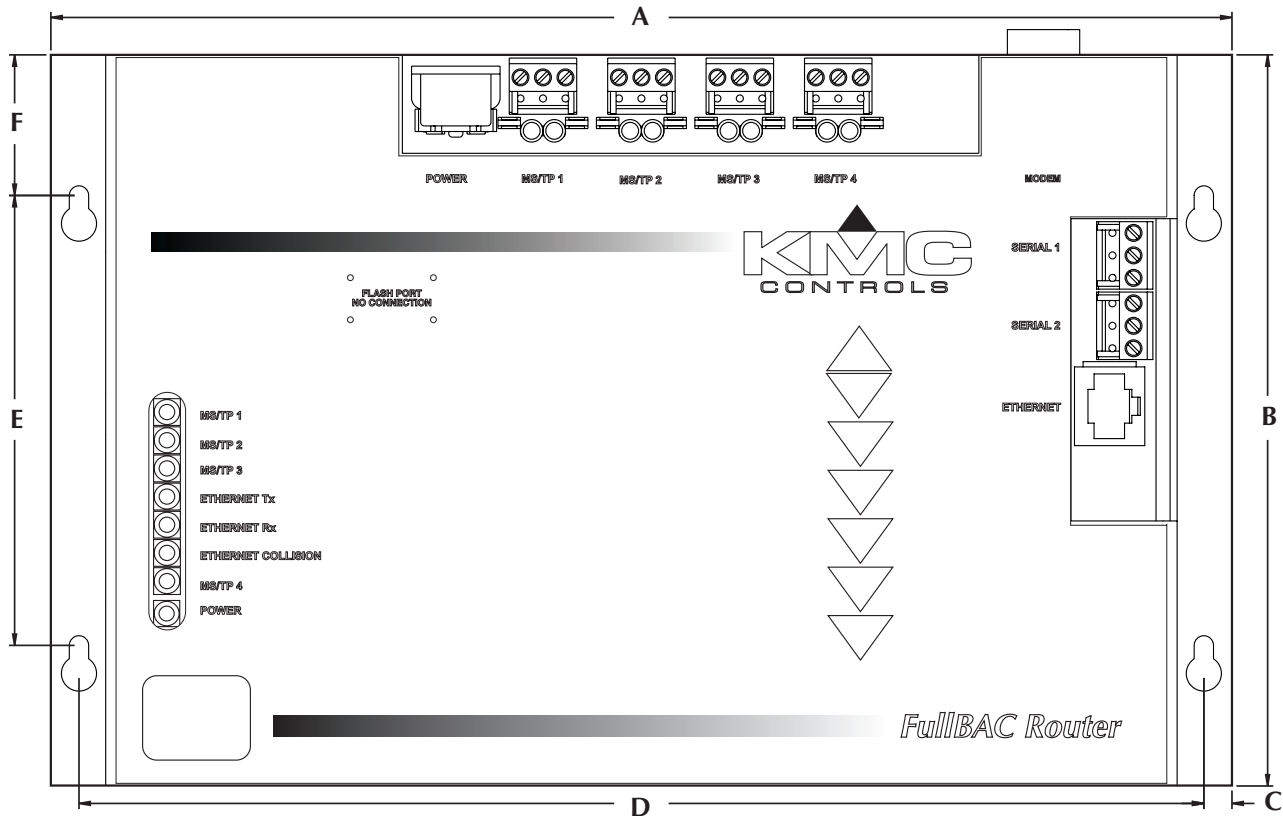
## BACnet RouterTools

- ◆ BACnet Router Tools software supplied with BAC-5050.
- ◆ Configure the router with a direct serial cable connection or over Ethernet.
- ◆ Self-discovers and displays remote networks.



BACnet Router Tools Remote Status display

## Dimensions



A	B	C	D	E	F	Height (not shown)
10.50 in.	6.50 in.	0.25 in.	10.00	4.00 in.	1.25 in.	0.98 in.
267 mm	165 mm	6 mm	254 mm	102 mm	32 mm	25 mm

### Installation

Power Supply	Supplied with 120/240 volt, 1.35 amp international-ready power supply Power-fail with auto restart capabilities
Weight	1.8 pounds (816 grams)
Regulatory	UL 916 Energy Management Equipment

### Environmental Limits

Operating Temperature	32 to 120° F (0 to 49° C)
Shipping Temperature	-40 to 140° F (-40 to 60° C)
Humidity	0-95% RH, non-condensing

### Accessories

HPO-6001	Replacement ferrite core
KMD-5563	Replacement 120/240 volt power supply
KMD-5569	External modem
KMD-5672	PC to Controller cable

### KMC Controls, Inc.

19476 Industrial Drive  
New Paris, IN 46553  
574.831.5250  
www.kmcccontrols.com  
info@kmcccontrols.com

